

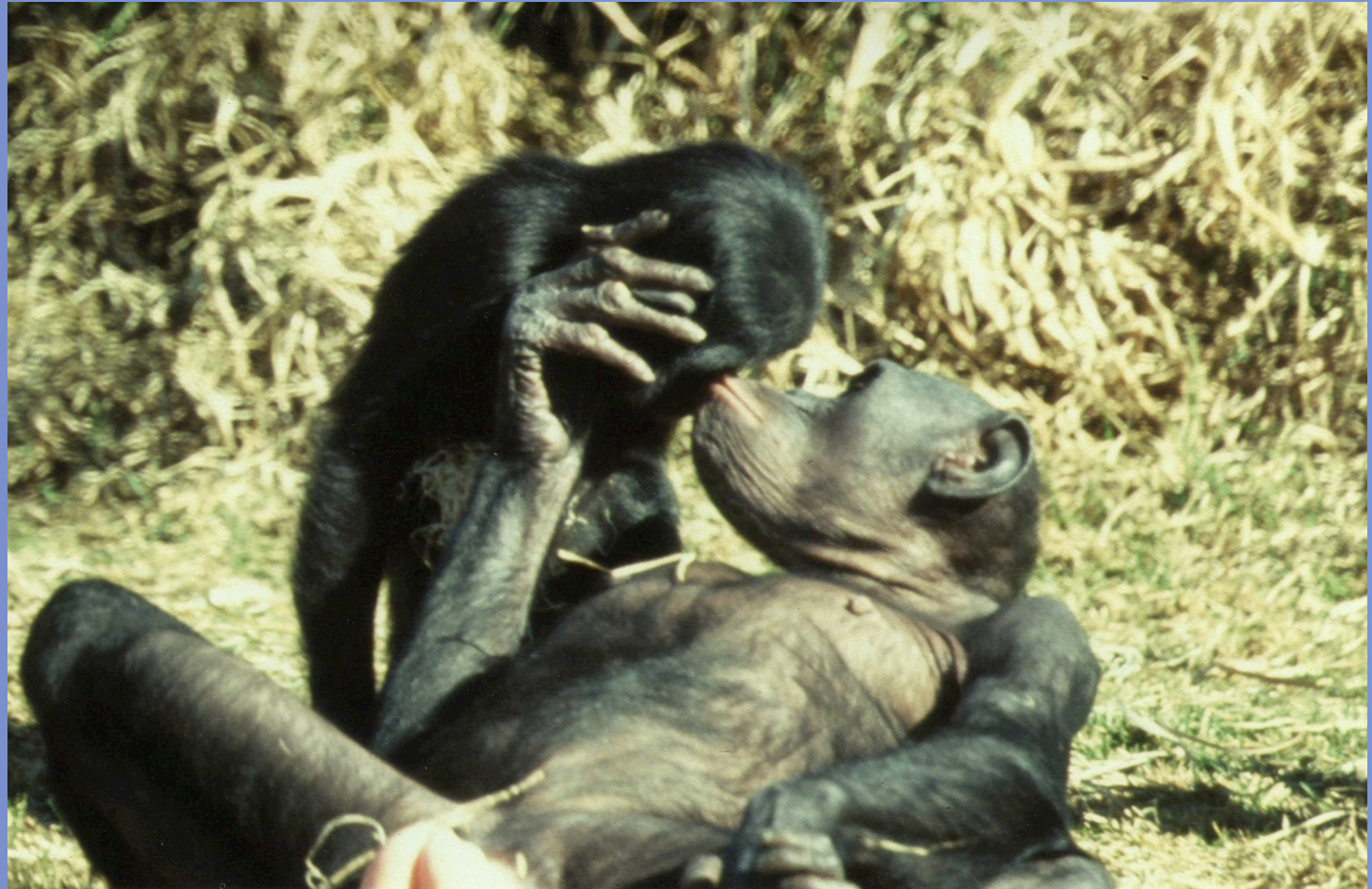


Ventral-Ventral Mating: 55%

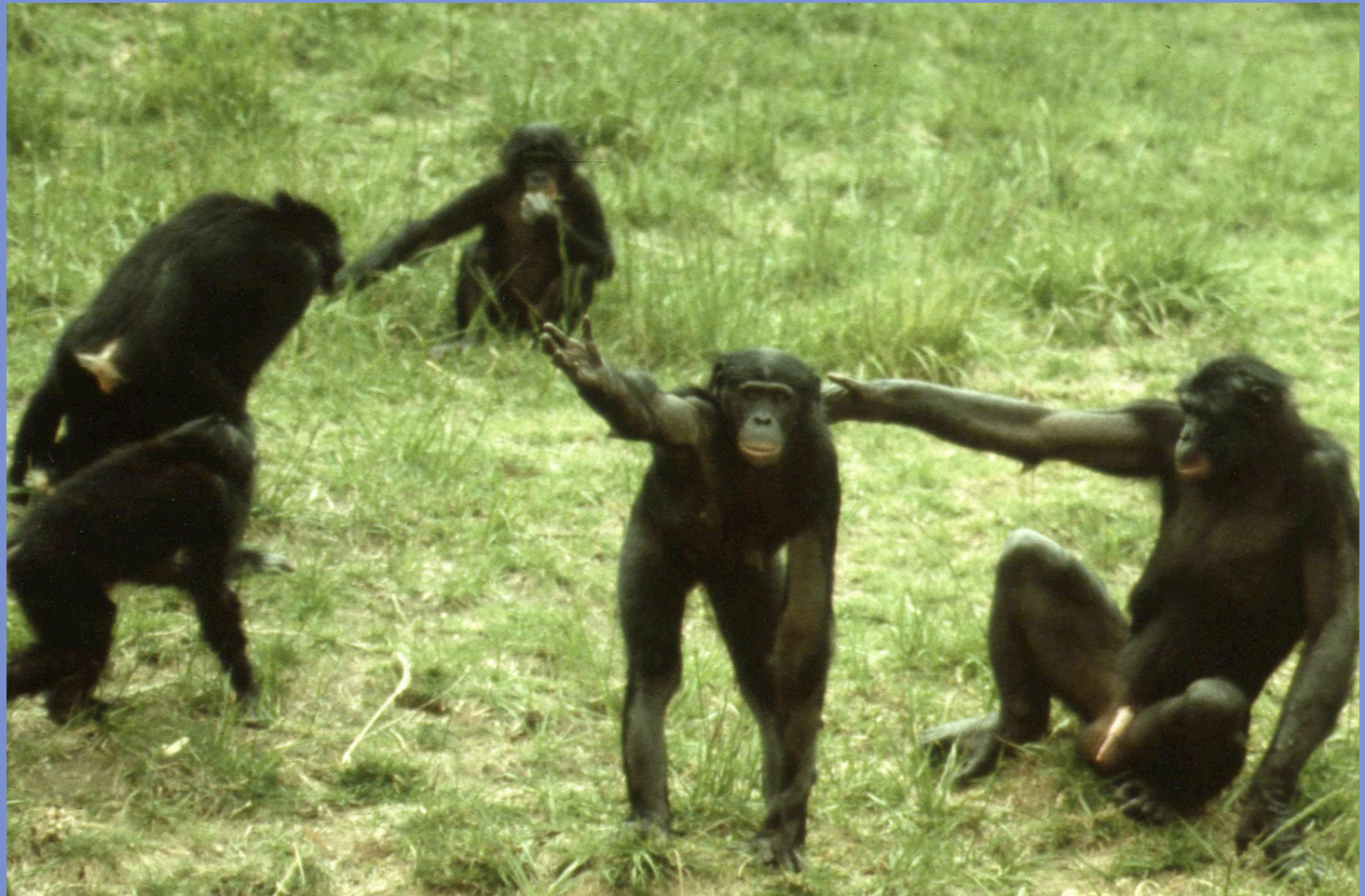
- N=523
- Parish and Gorbett, in prep.



$n=265$, $x=12$ seconds, range 1-52 seconds











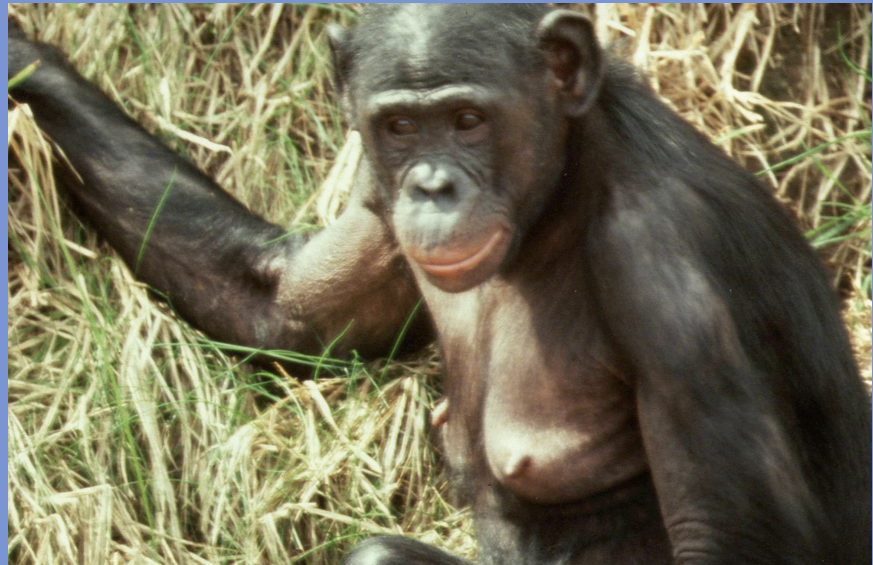






Female Bonds

- Allow females to form coalitions/alliances
- Leads to female dominance





Female Affiliation

- Females “tolerate” one another



Female Sexual Interaction

- Regulates competition